

# KOUGBANAN CONDE Binary SOLO

Warming



Warming

End of warming



Signal

The solo restarts in the REST measure



<p>Pattern displacement</p>	<p>Conclusion</p>
<p>Single-note Sequence</p>	<p>CONCLUSION signal</p>
<p>Cycle break</p>	
<p>The solo restarts here with a PATTERN</p>	<p>Same PATTERN, with DISPLACEMENT</p>



DISPLACEMENT...



Another PATTERN with DISPLACEMENT



Preparing for the CONCLUSION with a SINGLE NOTE SEQUENCE



CONCLUSION Signal

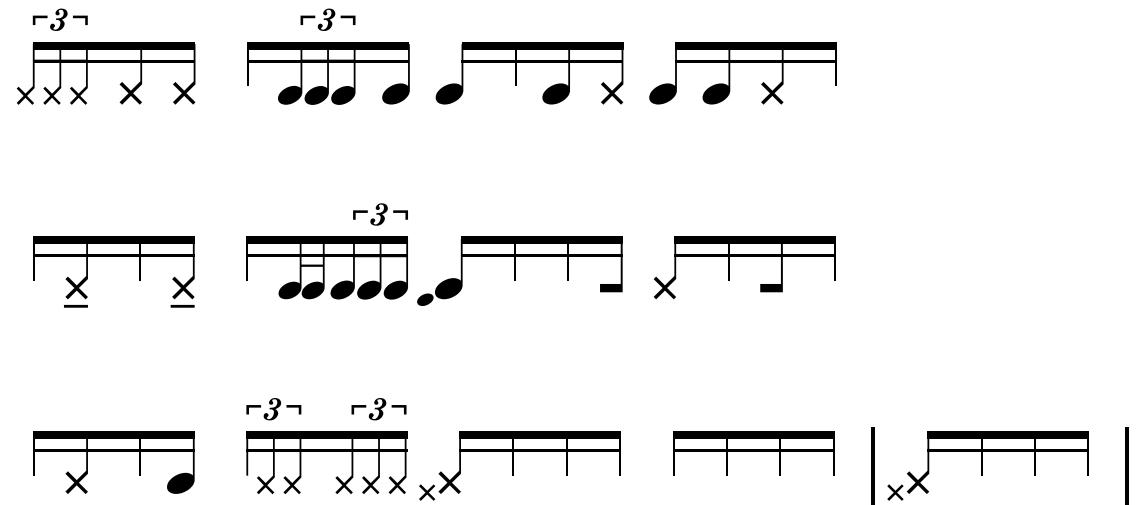


Listen to my interpretation [here](#).

# COMMENTARIES & INDICATIONS

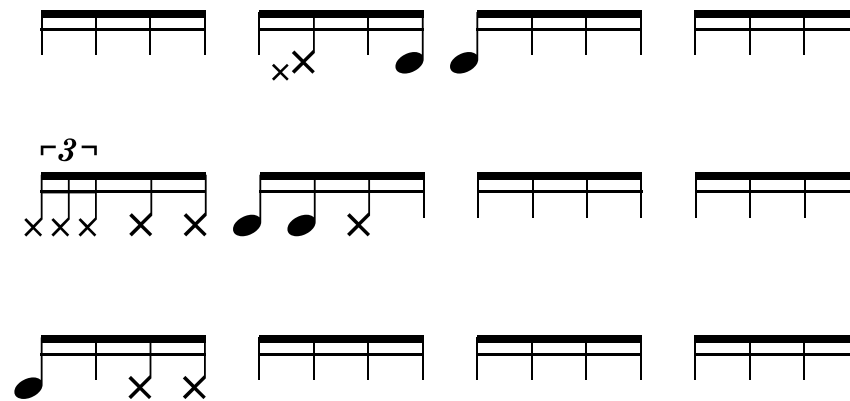
Practice different structural elements - such as SIGNALS, PATTERNS, SEQUENCES, WARMINGS - and rhythm techniques - such as DISPLACEMENT and PHRASING - separately before trying to emulate the entire solo. This will help you to feel their musical meaning, before rebuilding the whole scenario.

## SIGNALS



Listen to the audio examples [here](#).

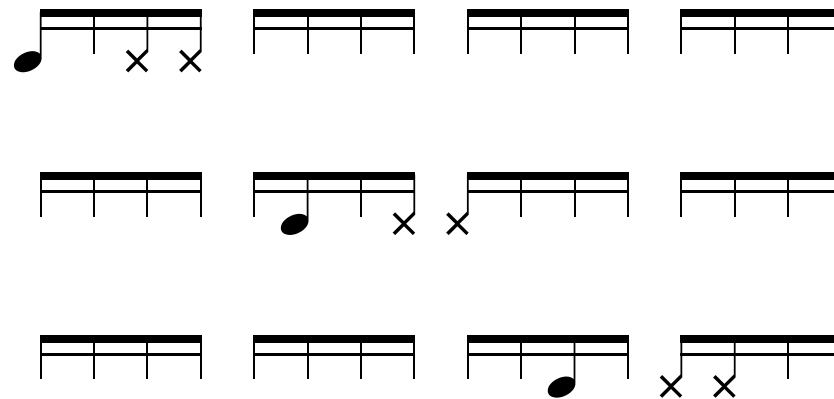
## PATTERNS



Listen to the audio examples [here](#).

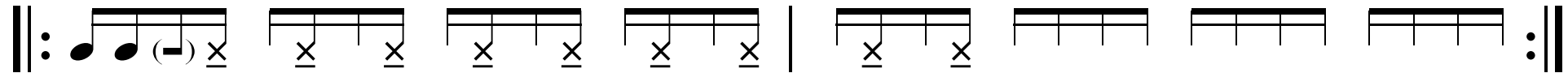
As an introduction to the displacement technique play the displaced patterns at their different occurrences before playing the entire sequence.

## DISPLACEMENT



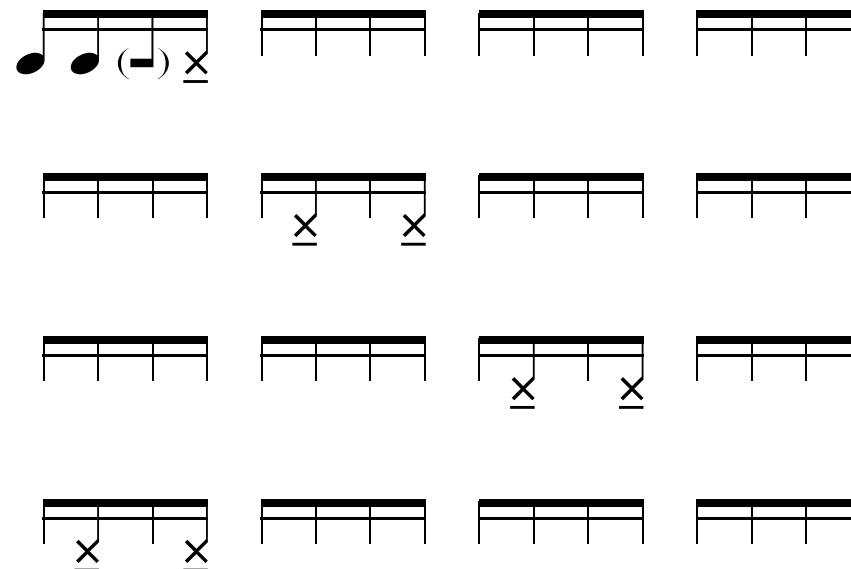
Listen to the audio examples [here](#).

## SEQUENCE



Listen to the audio example [here](#).

Play FRAGMENTS of the whole SEQUENCE to become familiar with the different places in the measure.



Listen to the audio examples [here](#).

## WORKING WITH DISPLACEMENTS

Get used to the displacements progressively. You know that Koungbanan CONDE is not counting the beats in his mind when he plays displacements, right?

As any of us he wasn't able to do it at first, then with practice he mastered the technique. Don't waste your time using workarounds the pros don't.



Listen to the audio examples [here](#).



## PHRASING

There is an intense ternary phrasing in the third displacement sequence. Don't think too much just listen to this part again and again, watch the video, it will come with practice.



Listen to the audio example [here](#).